



# Faxaflóahafnir / Faxaports

## Cruise Port Facilities 2023

30. June 2023





# Contents

- Environment and safety
- Port Security ISPS
- Old Harbour / Gamla Höfnin
  - Vehicle access, Terminals Miðbakki & Faxagarður
- Skarfabakki area Terminals
  - Skarfabakki-312
  - Skarfabakki-315
  - Korngarður
- Terminal bus – City Center
- Akranes, Anchorage
- Equipment services

# Safety and Enviroment

- Faxaports are ISO 14001, ISO 45001 Certified
- Equal pay certification IST 85
- HSE policy
  - <https://www.faxafloahafnir.is/stefnur/>
- HSE regulations
  - <https://www.faxafloahafnir.is/oryggis-og-umhverfisreglur/>



# Port Security


## All our Cruise port facilities are ISPS certified

- Port facility is fenced off and security checked prior to each arrival
- Security guards on site while ship is present at port facility
- Minimum two security guards area on duty
- At passenger turnaround, more guards are called in.
- It is strictly prohibited to open fence gates unless port security is present
  - Extra guards are added on duty if additional gates are needed for example at turnaround
- Access control at terminals
- Guests and provisions need to be noticed in advance
- Provisions
  - Drivers need to announce their presence in terminal
  - Port security will control access through gates
- Manned guarding on site and CCTV accessible on site and remote
- Mandatory baggage screening at all turnarounds in Skarfabakki and Korngarður





# Port security overview

 Faxaflóahafnir sf Associated Icelandic Ports  Terminal / Quay		ISPS Security level	Public access restricted	Entering ISPS area. Access control / Id check	Ship ID/pass check	Vehicles entering ISPS area access control	Security guards on site	PAX/crew screening on port call	Baggage screening	Hand luggage / passenger screening	Passenger area CCTV surveillance	Quay cctv surveillance	Waterside Lighting (May-July natural light 24/7)	Bus access to gangway	Taxis/private vehicle access to gangway
Old harbour	Miðbakki 232	1	Yes	Yes	Yes	Yes, random inspections	Yes	No	No	No	Yes	Yes	Yes	No, exceptions on demand	No
Old harbour	Faxagarður 241	1	Yes	Yes	Yes	Yes, random inspections	Yes	No	No	No	Yes	Yes	Yes	No, exceptions on demand	No
Skarfabakki	Skarfabakki 312	1	Yes	Yes	Yes	Yes, random inspections	Yes	No	Yes at PAX turnaround, mandatory	Yes at PAX turnaround, mandatory	Yes	Yes	Yes	No	No
Skarfabakki	Skarfabakki 315	1	Yes	Yes	Yes	Yes, random inspections	Yes	No	Yes at PAX turnaround, mandatory	No	Yes	Yes	Yes	No	No
Korngarður	Korngarður	1	Yes	Yes	Yes	Yes, random inspections	Yes	No	Yes at PAX turnaround, mandatory	No	Yes	Yes	Yes	No	No



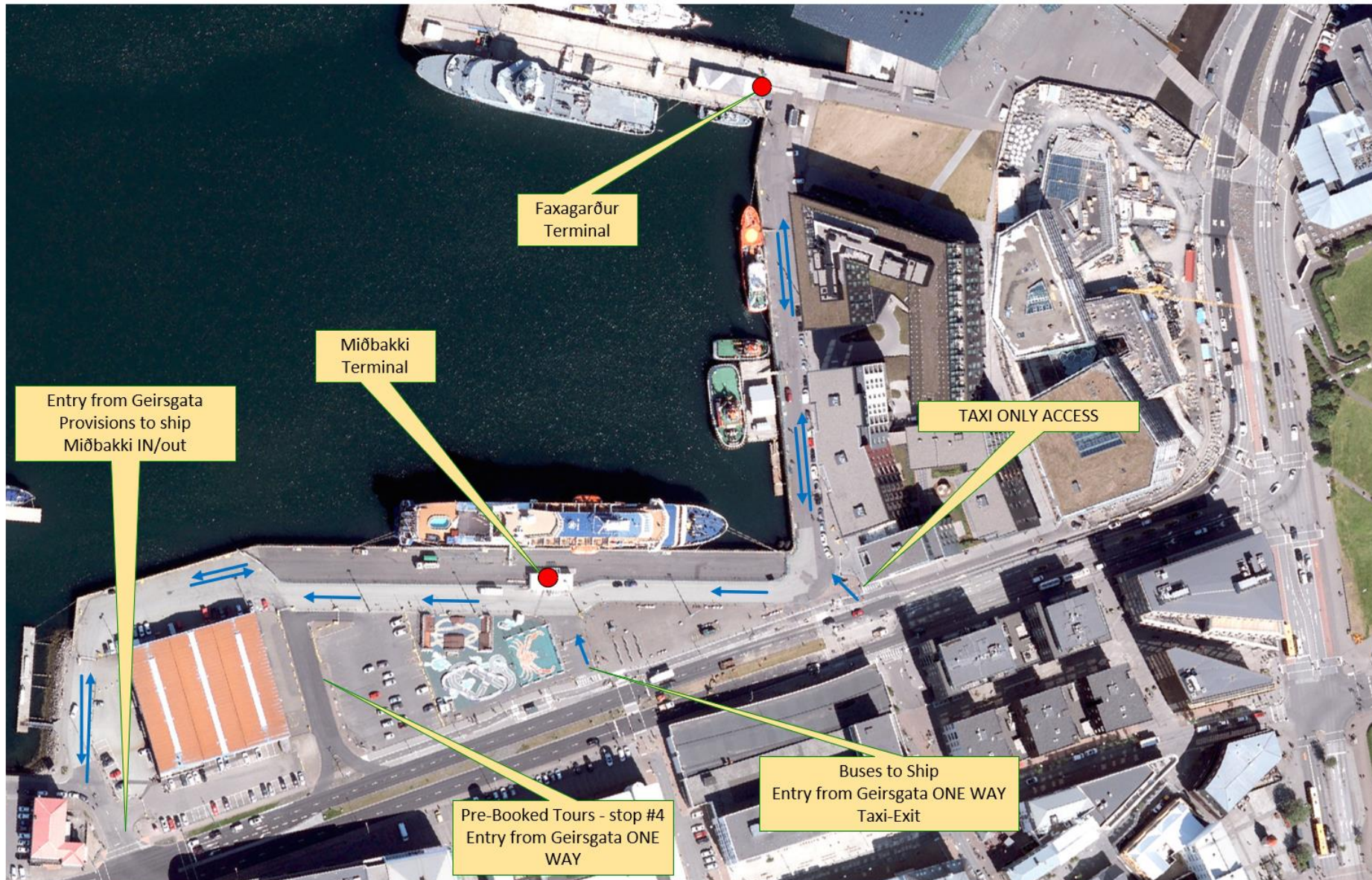
Reykjavík Gamla höfnin (Old Harbour)

**TERMINAL MIÐBAKKI & FAXAGARÐUR**





# Old Harbour – Traffic flow







# Miðbakki Cruise Terminal







# Miðbakki Cruise Terminal







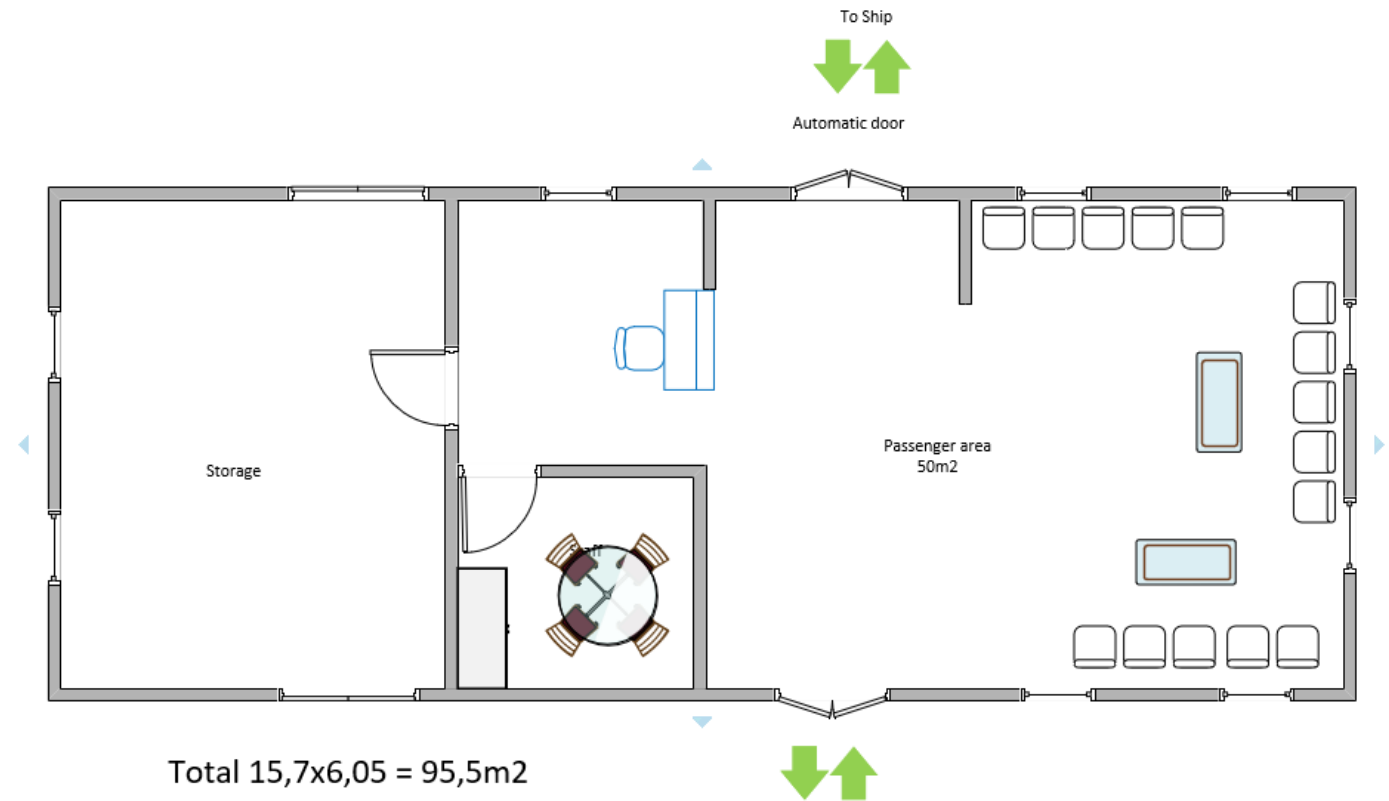
# Miðbakki Cruise Terminal

## TAXI ONLY access from Bryggjugata





# Miðbakki Cruise Terminal



# Miðbakki Cruise Terminal

## MIÐBAKKI Terminal

- Tent for baggage handling and check in, is available on demand
  - Tent size for baggage
    - $6 \times 18\text{m} = 108\text{m}^2$

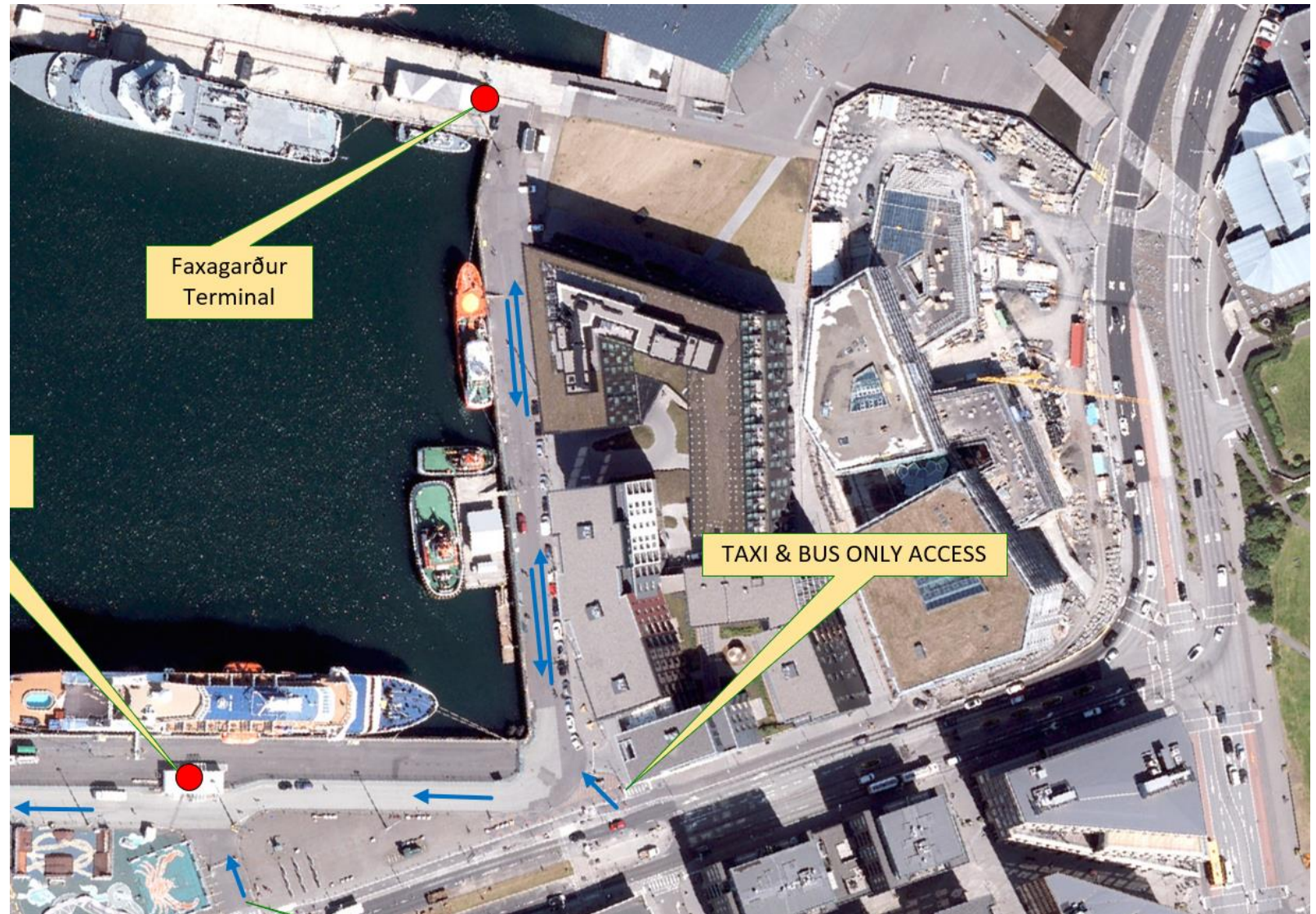






# Faxagarður Cruise Terminal

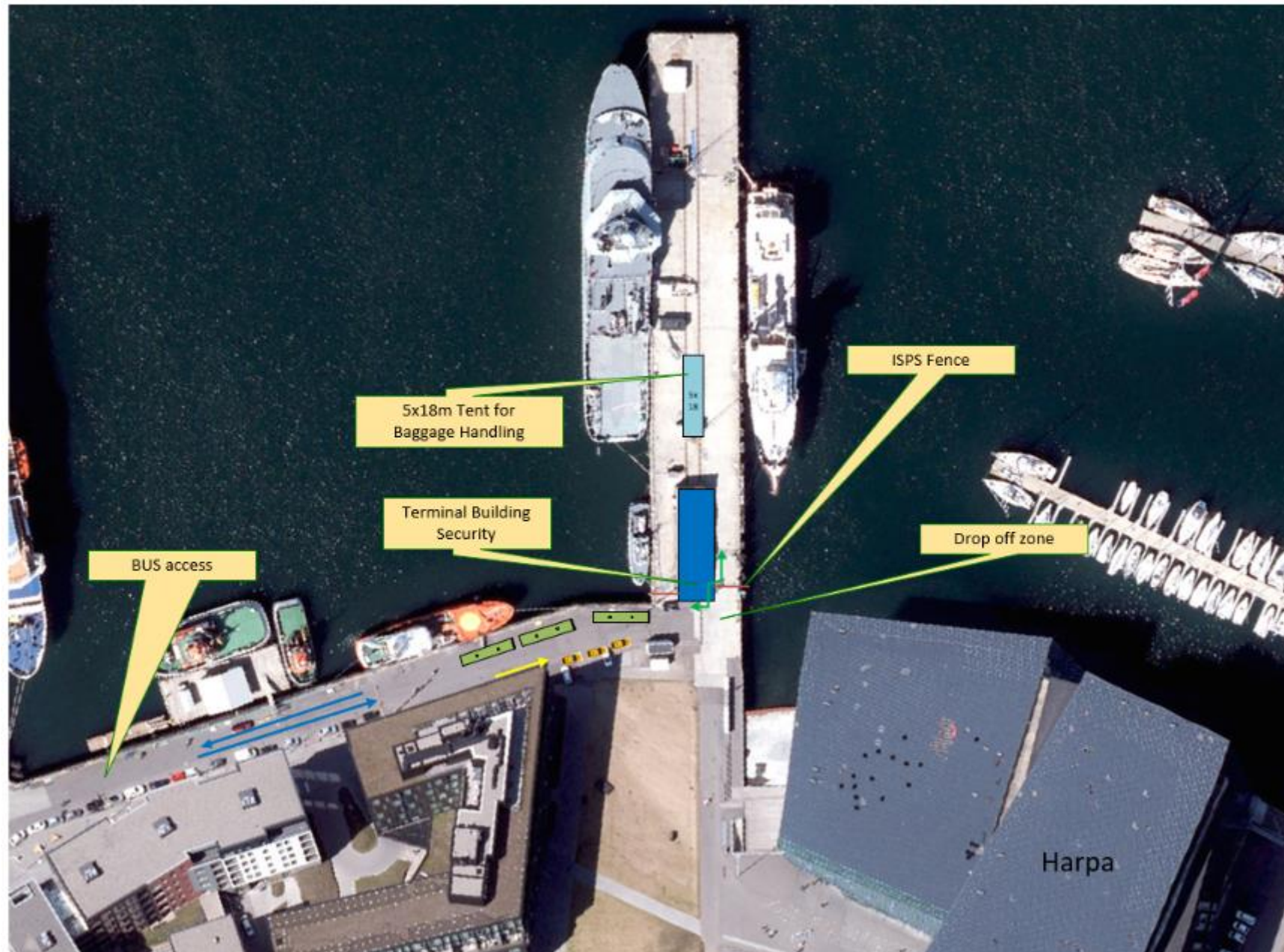
## Access to Faxagarður







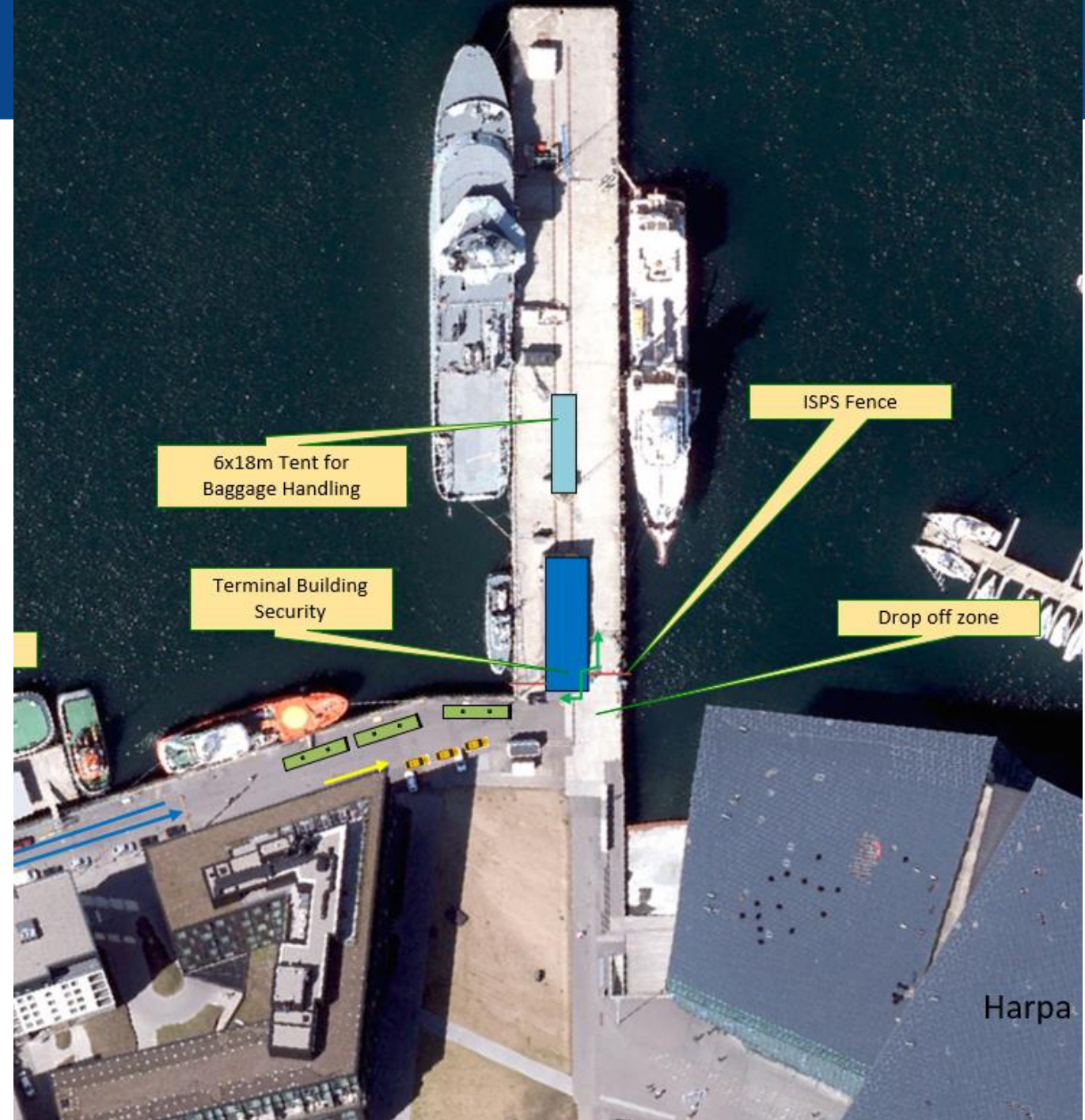
# Faxagarður Cruise Terminal







- Tent for baggage handling and check in, is available on demand
  - Tent size for baggage
    - $6 \times 18 \text{m} = 108 \text{m}^2$





Reykjavík

**SKARFABAKKI**  
**TERMINAL 312**



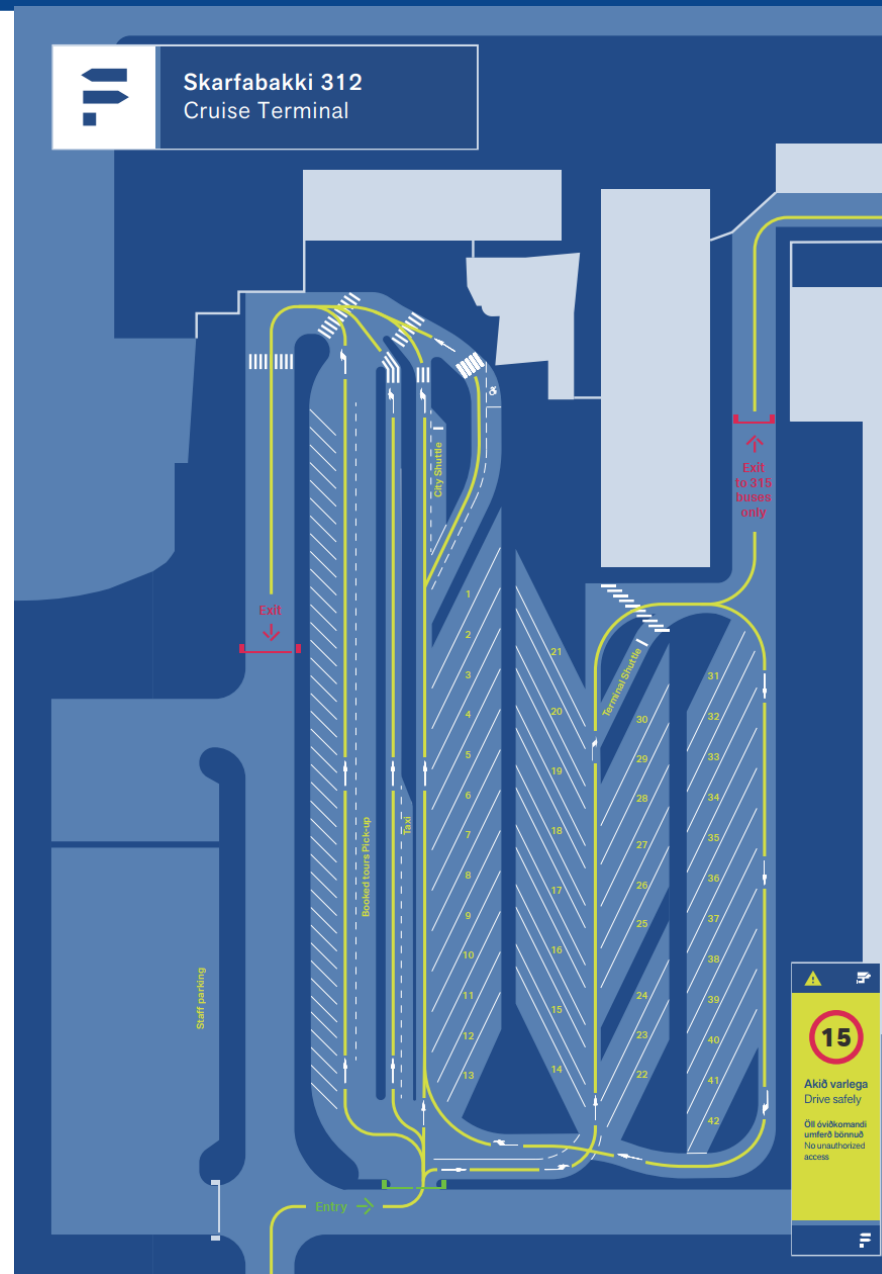
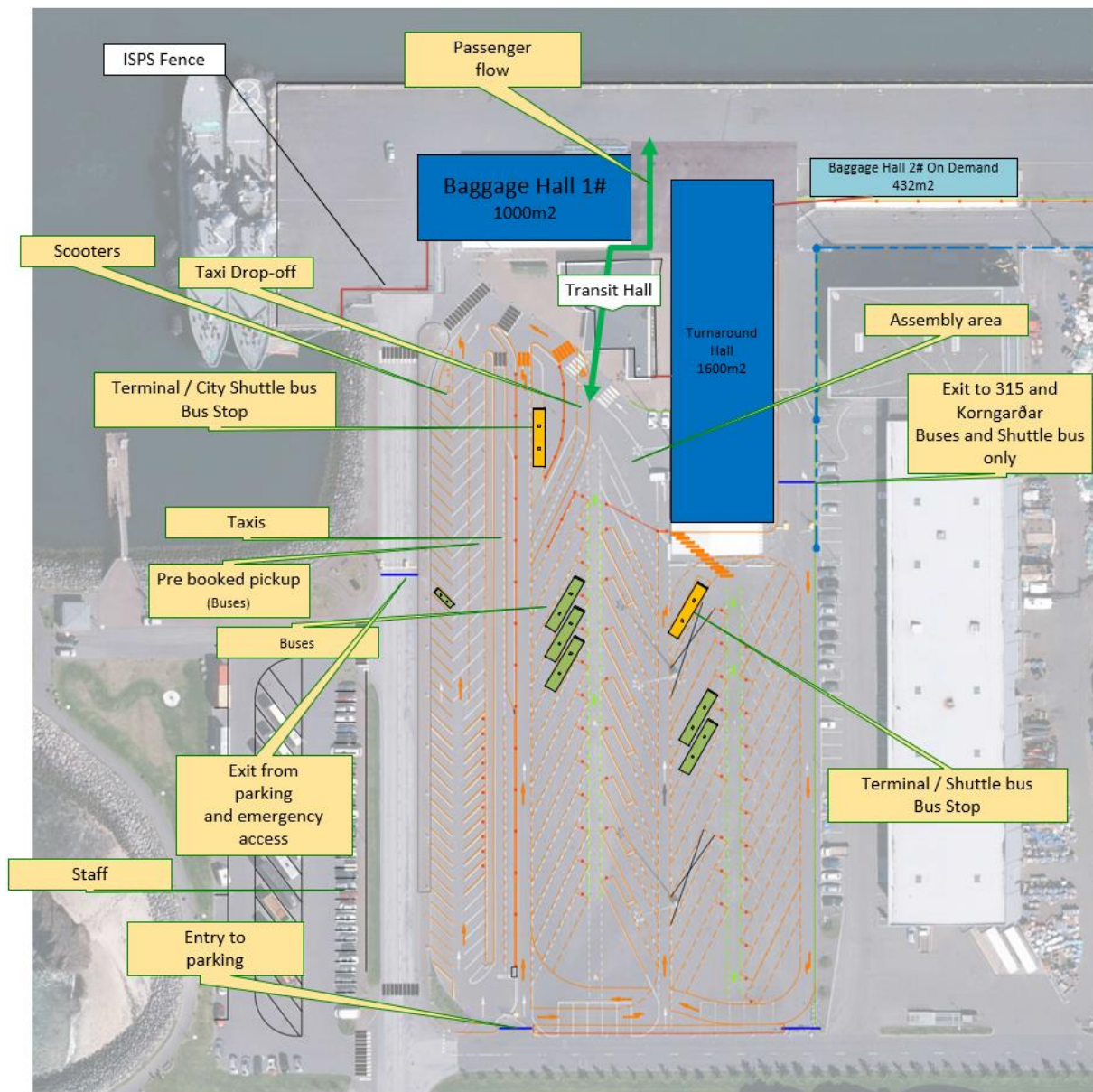
# Skarfabakki 312 & 315 -Terminals







# Skarfabakki Cruise Terminal 312





Faxaflóahafnir sf  
Associated  
Icelandic  
Ports

# Skarfabakki 312 Parking



Upplýsingar  
Information



Upplýsingar  
Information



**You are here**  
Skarfabakki 312 / Cruise Terminal

- 1 Skarfabakki 315 / Cruise Terminal
- 2 Krongarður Cruise Terminal
- 3 Miðbakki Cruise Terminal
- 4 Reykjavík City Hall
- 5 Hallgrímskirkja
- 6 Höfði House
- 7 Sun Voyager
- 8 Perlan / View point
- 9 Laugardalur / Swimming pool
- 10 Domestic Air Terminal
- 11 BSI / Bus Terminal

**You are here**  
Skarfabakki 312 / Cruise Terminal

- 1 Cruise Terminal 312
- 2 Check-in / Security
- 3 Baggage Drop-off
- 4 Bus 1 - 21
- 5 Bus 22 - 42
- 6 Taxi
- 7 Booked Tours Pick-up
- 8 City Shuttle
- 9 Terminal Shuttle
- 10 Meeting Point
- 11 Walkway / City Center

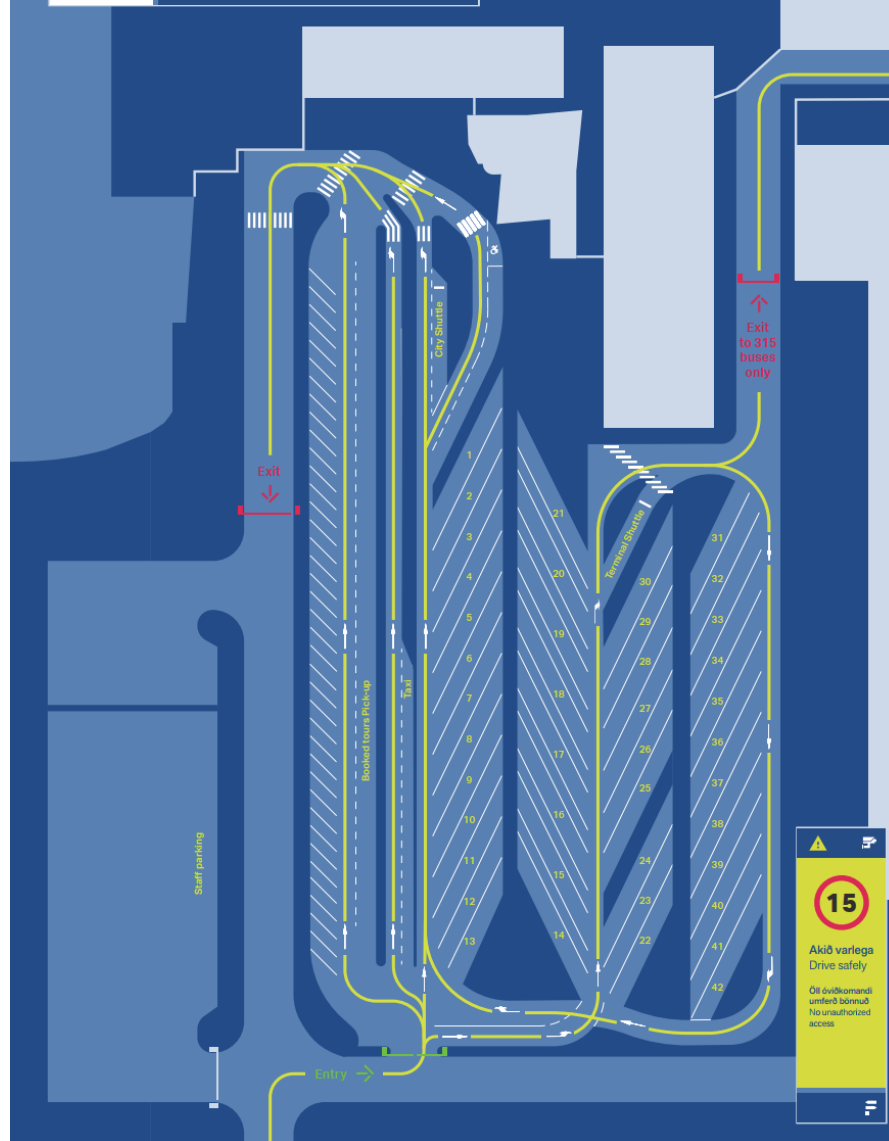
- WC
- Baggage Drop-off
- Bus 1 - 21
- Bus 22 - 42
- Taxi
- Booked Tours Pick-up
- City Shuttle
- Terminal Shuttle
- Meeting Point
- Walkway / City Center

Faxaflóahafnir

Faxaflóahafnir



Skarfabakki 312  
Cruise Terminal



Skarfabakki 312  
Cruise Terminal



Brottför  
Departure



Koma  
Arrival



Rúta 1 - 13  
Bus



Rúta 14 - 42  
Bus



Leigubíll  
Taxi



Bókaðar ferðir  
Booked tours  
Pick-up



Faxaflóahafnir



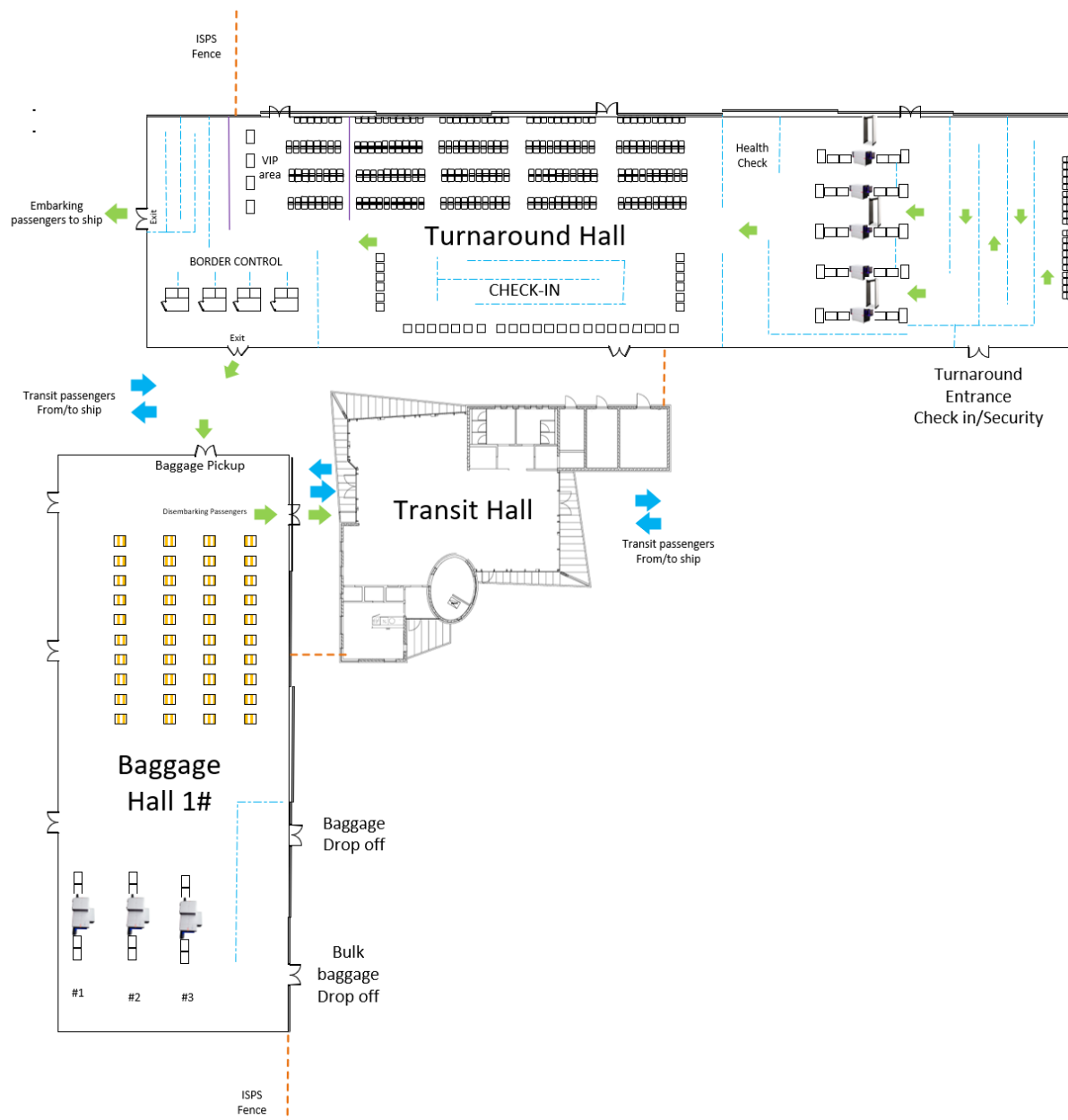


# Skarfabakki Cruise Terminal 312





# Skarfabakki Cruise Terminal 312





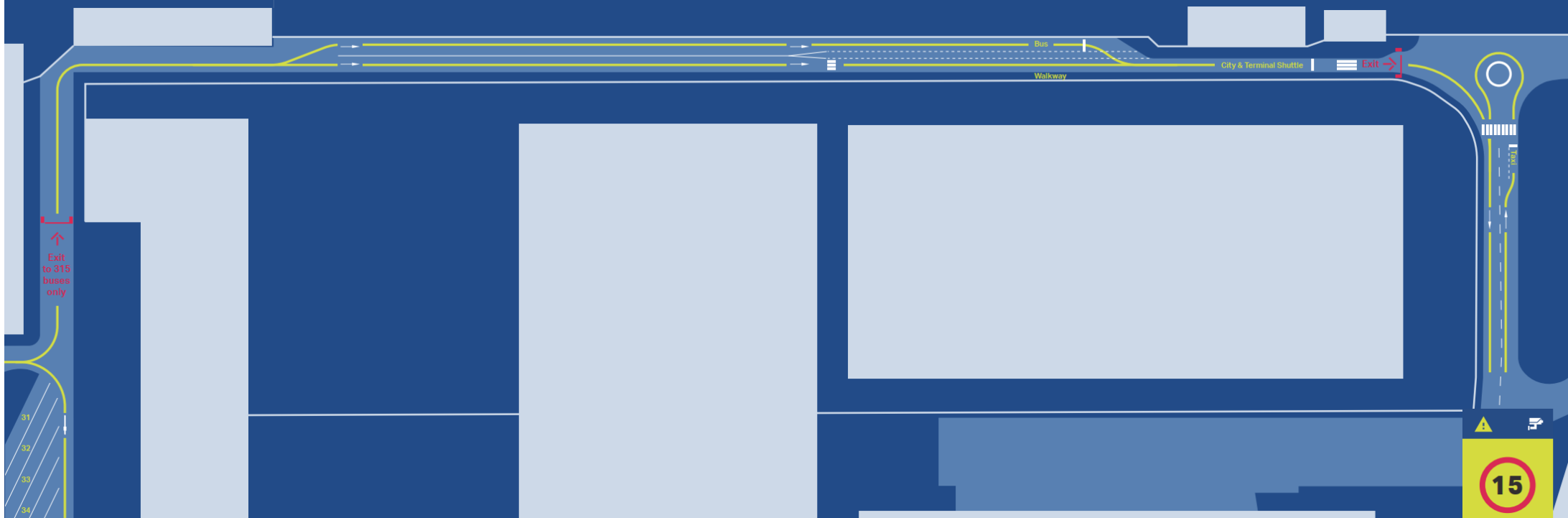


Reykjavík

**SKARFABAKKI**  
**TERMINAL 315**



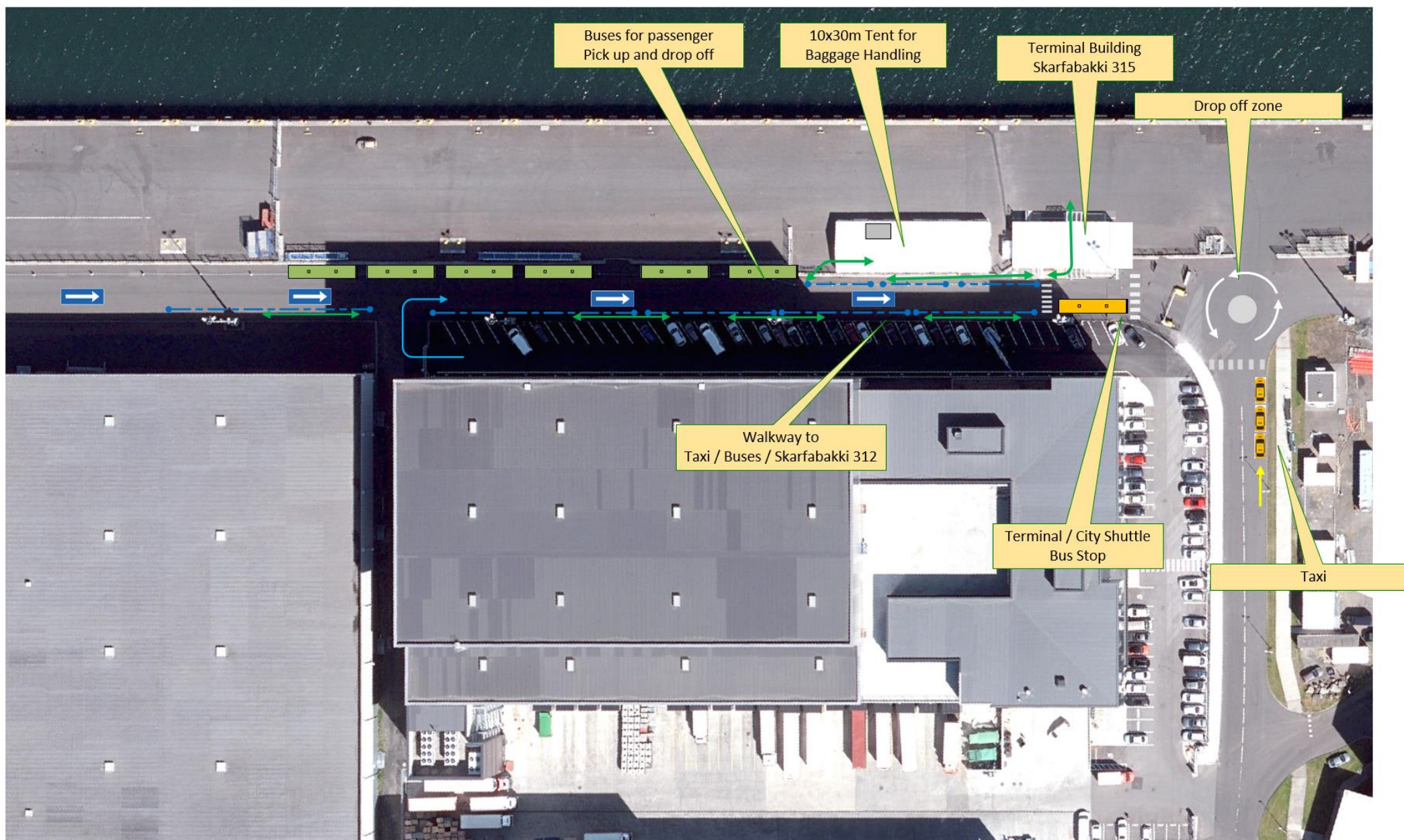
## Skarfabakki 315 Cruise Terminal





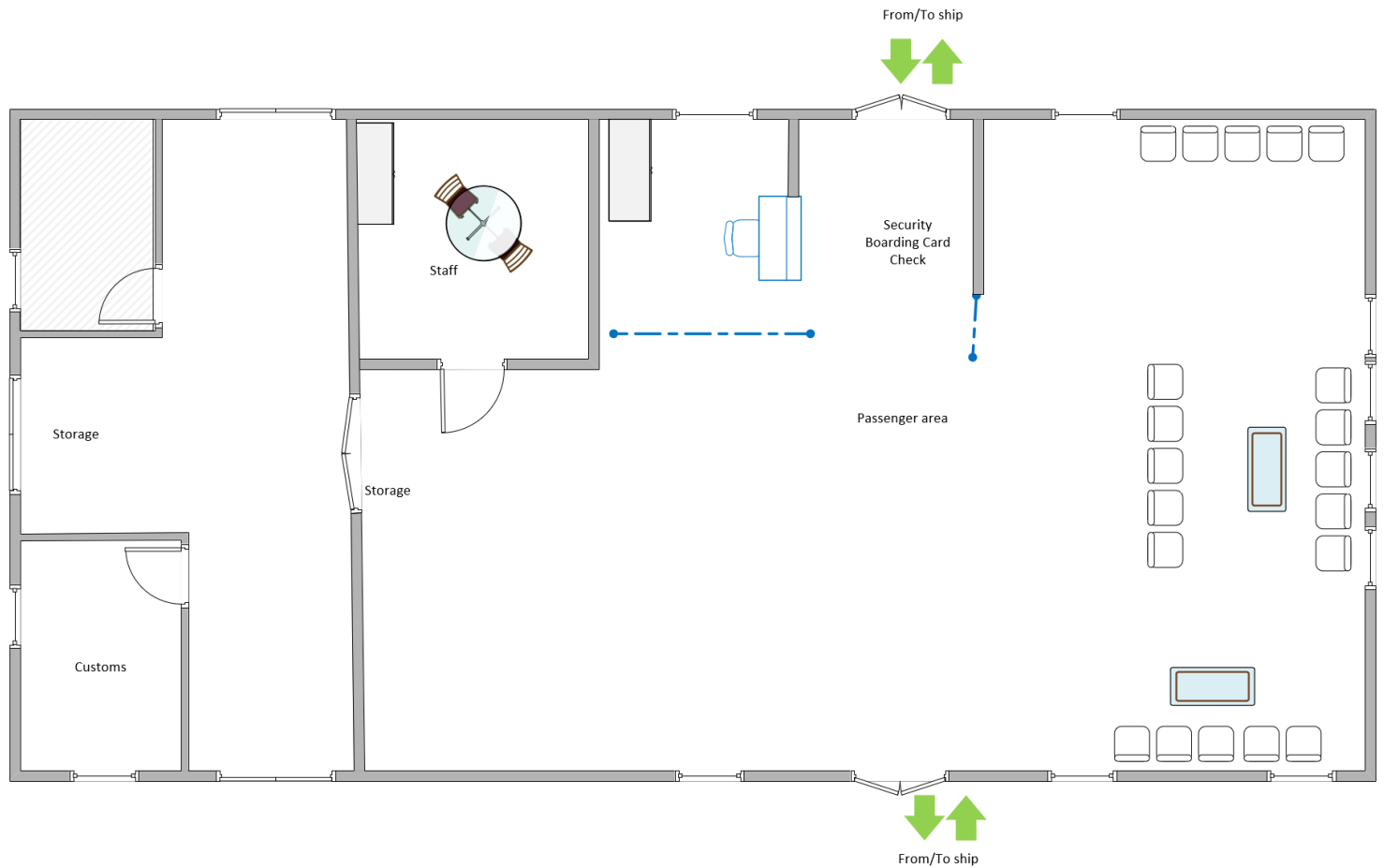
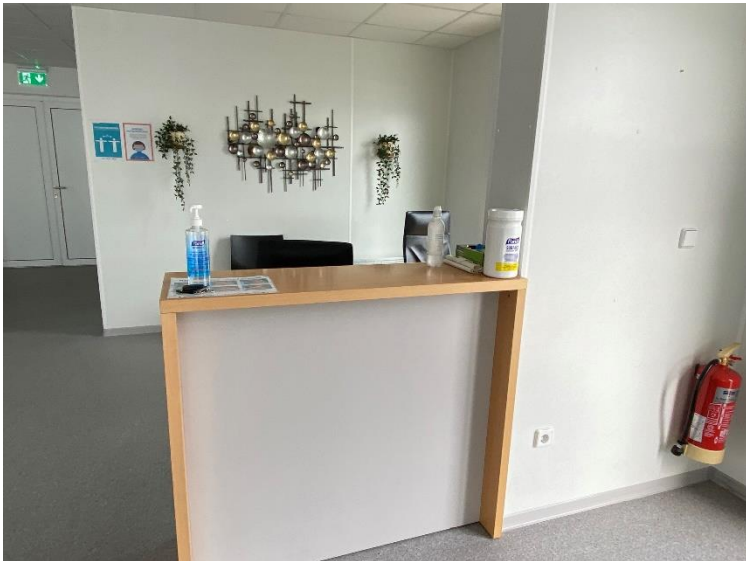


# Skarfabakki Cruise Terminal 315



# Skarfabakki Cruise Terminal 315

Skarfabakki 315 Terminal, Total 180m<sup>2</sup>





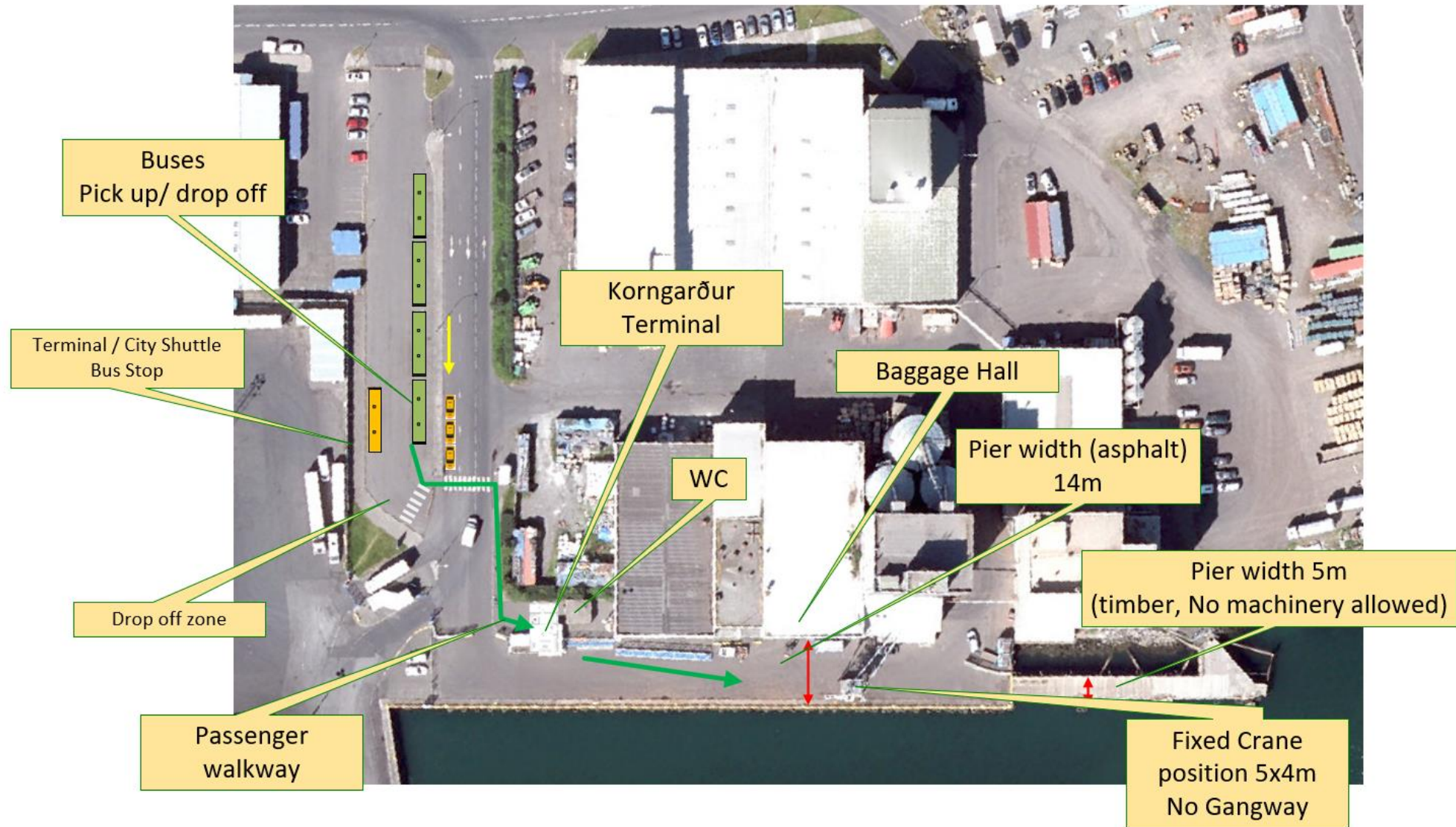


Reykjavík

**KORNGARÐUR CRUISE TERMINAL**



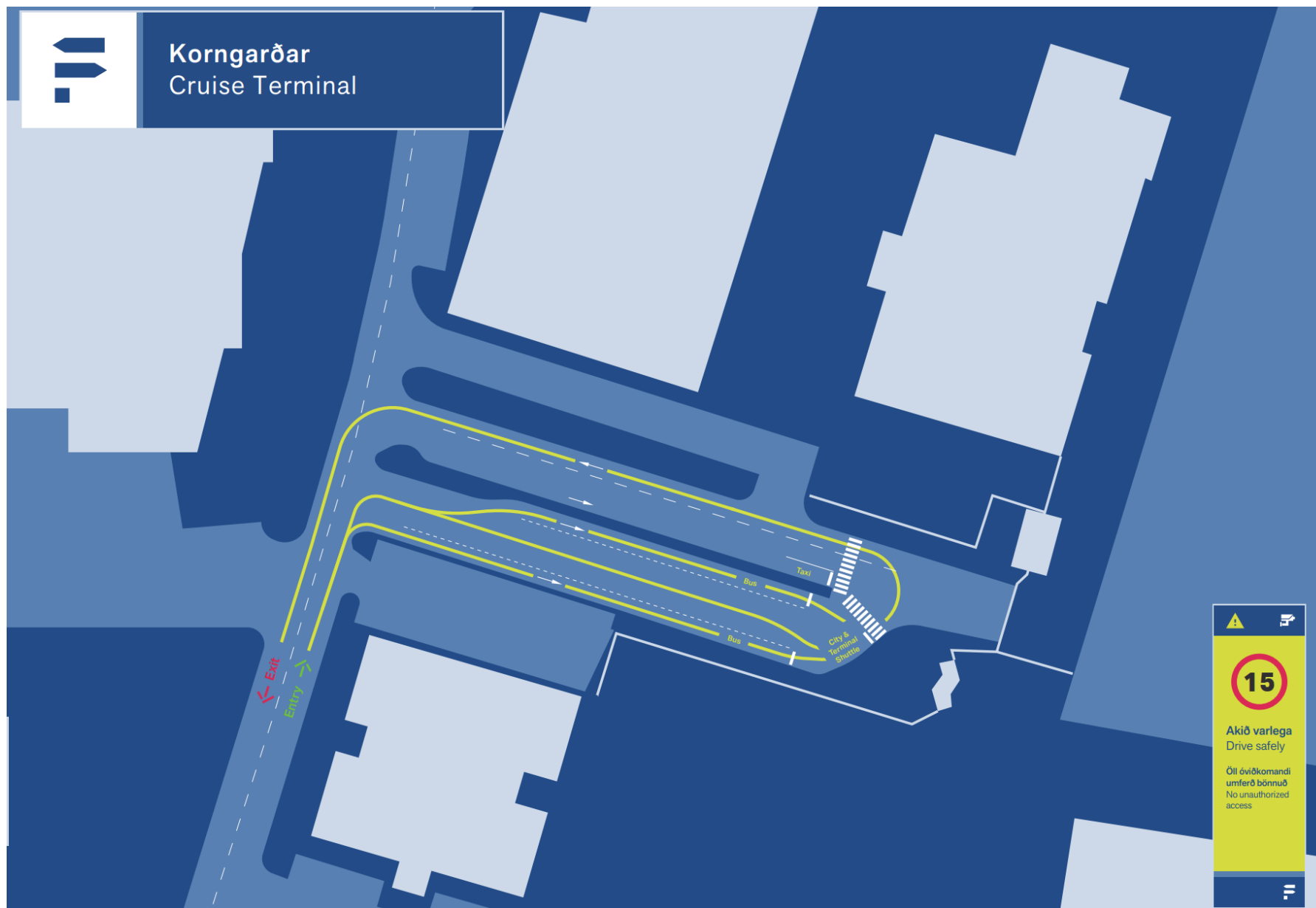
# Korngarður Cruise Terminal



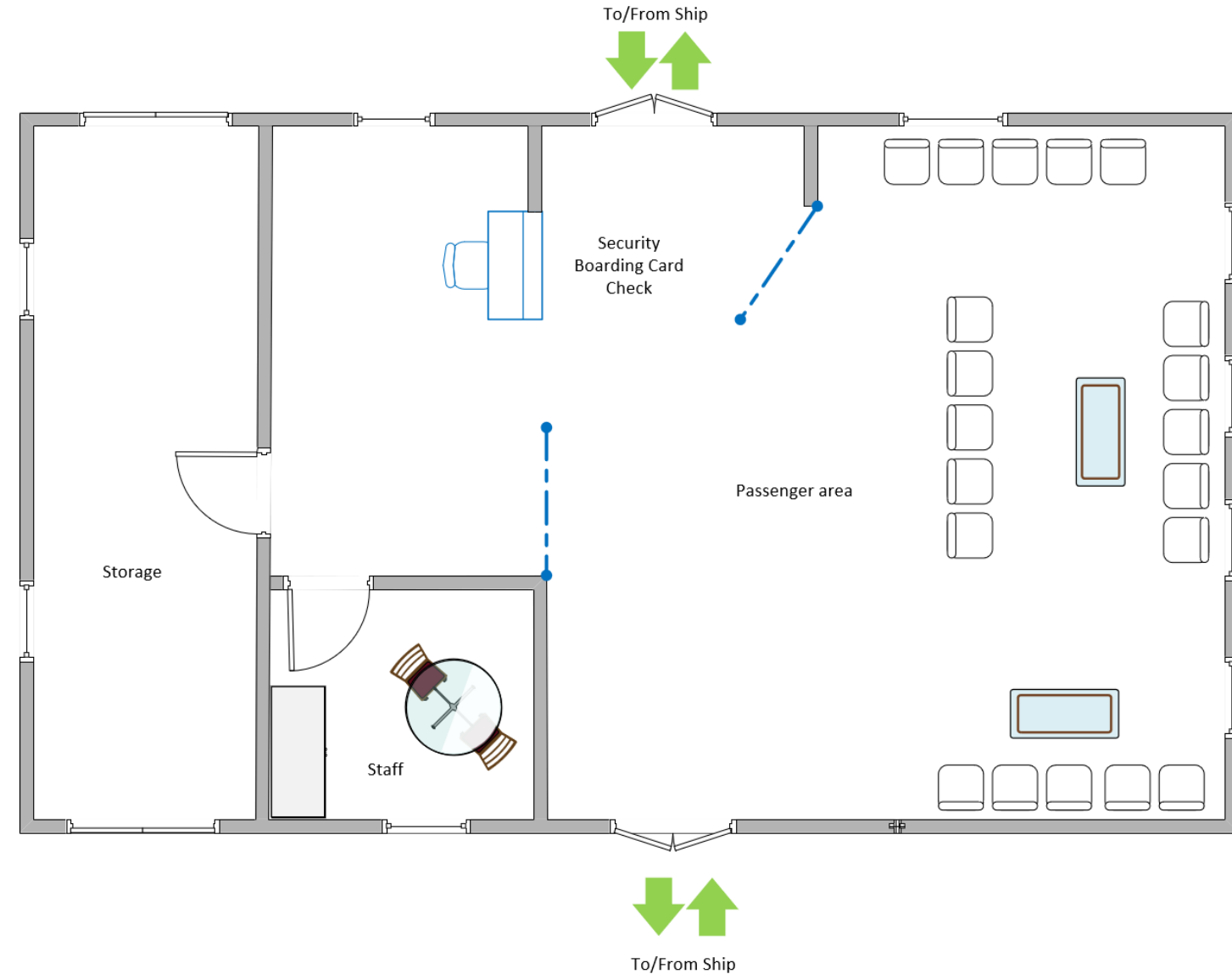




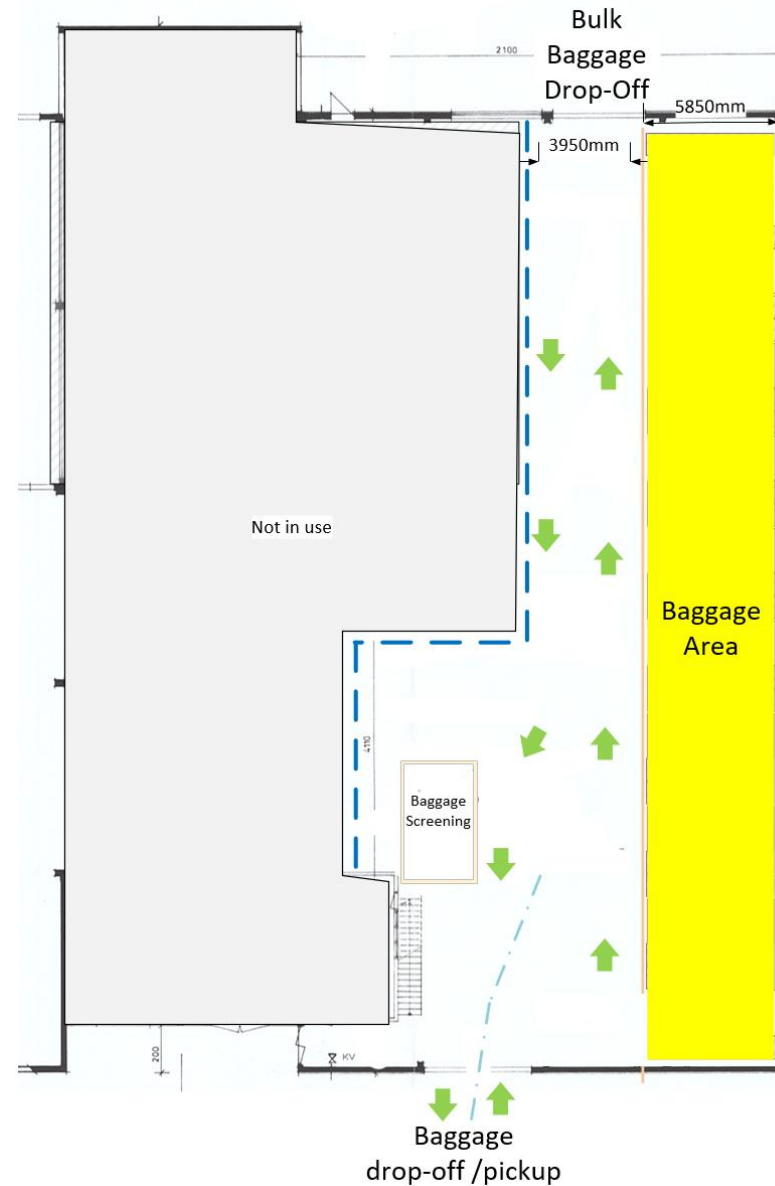
## Korngarðar Cruise Terminal



# Korngarður Cruise Terminal



# Korngarður Baggage Hall

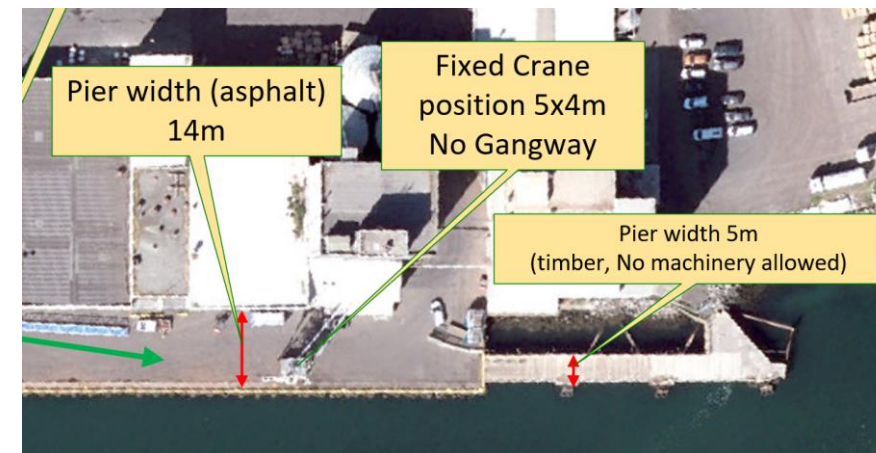




## Attention

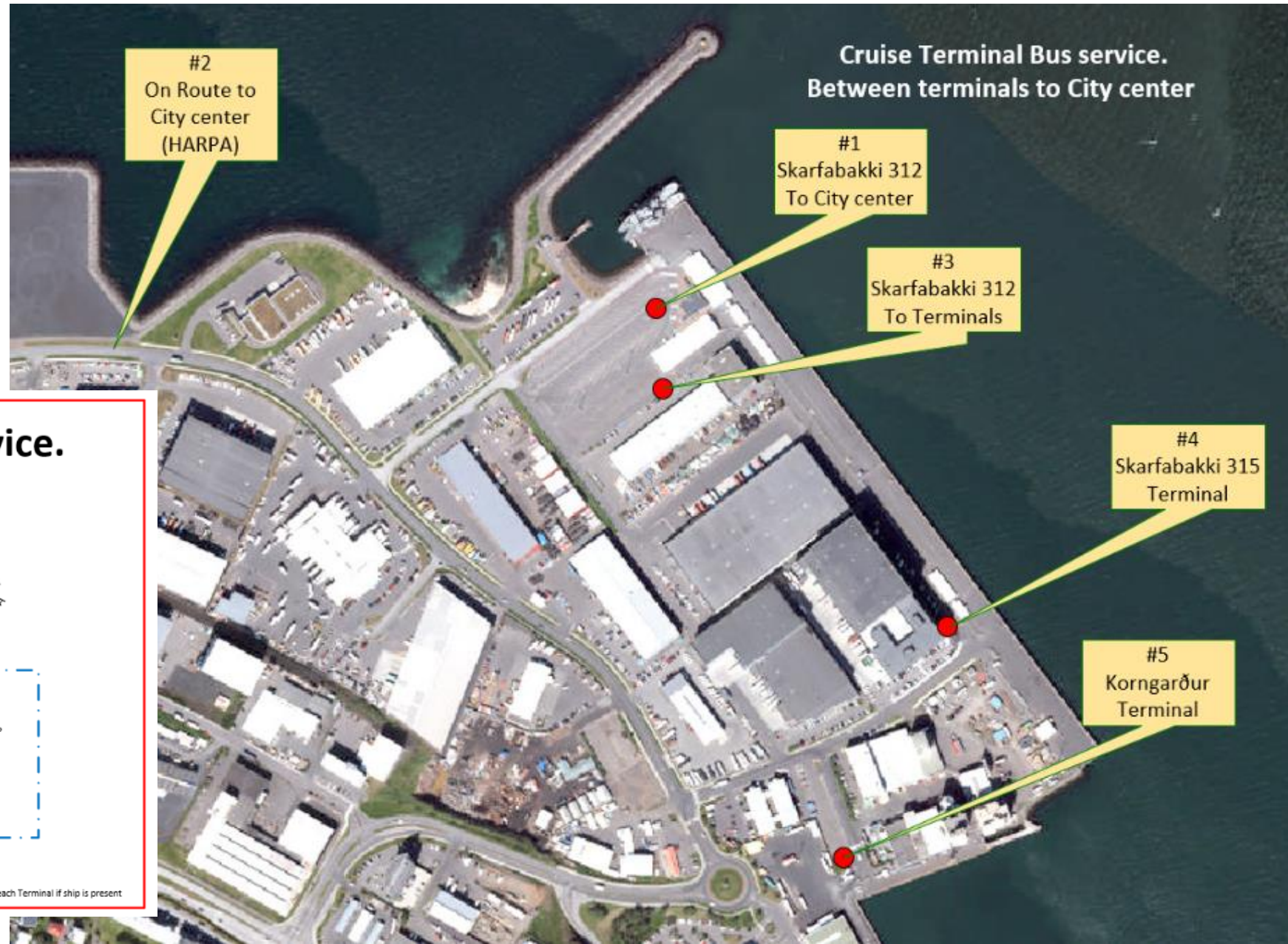
### Gangways:

- Yokohama fenders are mandatory (diameter 3,5m) if port gangways are used:
  - Pier is only 14m wide from
  - Outer part of the pier, approx. 55 meters, is not accessible for passengers
- Please note that activity area on pier is limited.
  - Garbage, Baggage and provision arrangements to and from ship need to be planned prior to call.
  - Shell doors must allocate in line with asphalt pier
    - Any other arrangements will require additional resources

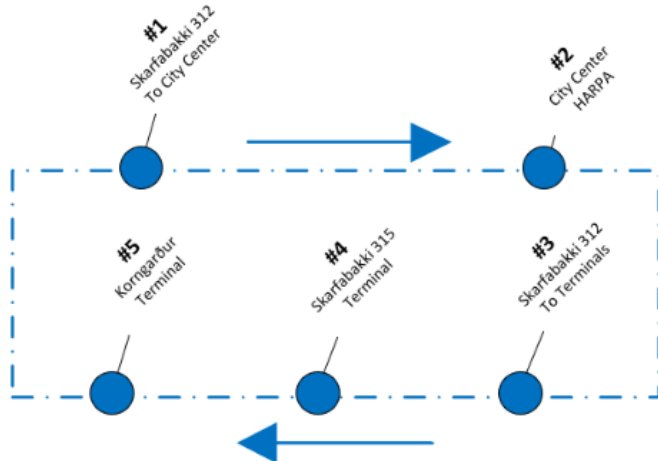




# Cruise Terminal and City Shuttle



## Cruise Terminal Bus service. Route Map



\* Bus only stops at each Terminal if ship is present



# Cruise Terminal and City Shuttle



## Harpa City shuttle



## Harpa City shuttle



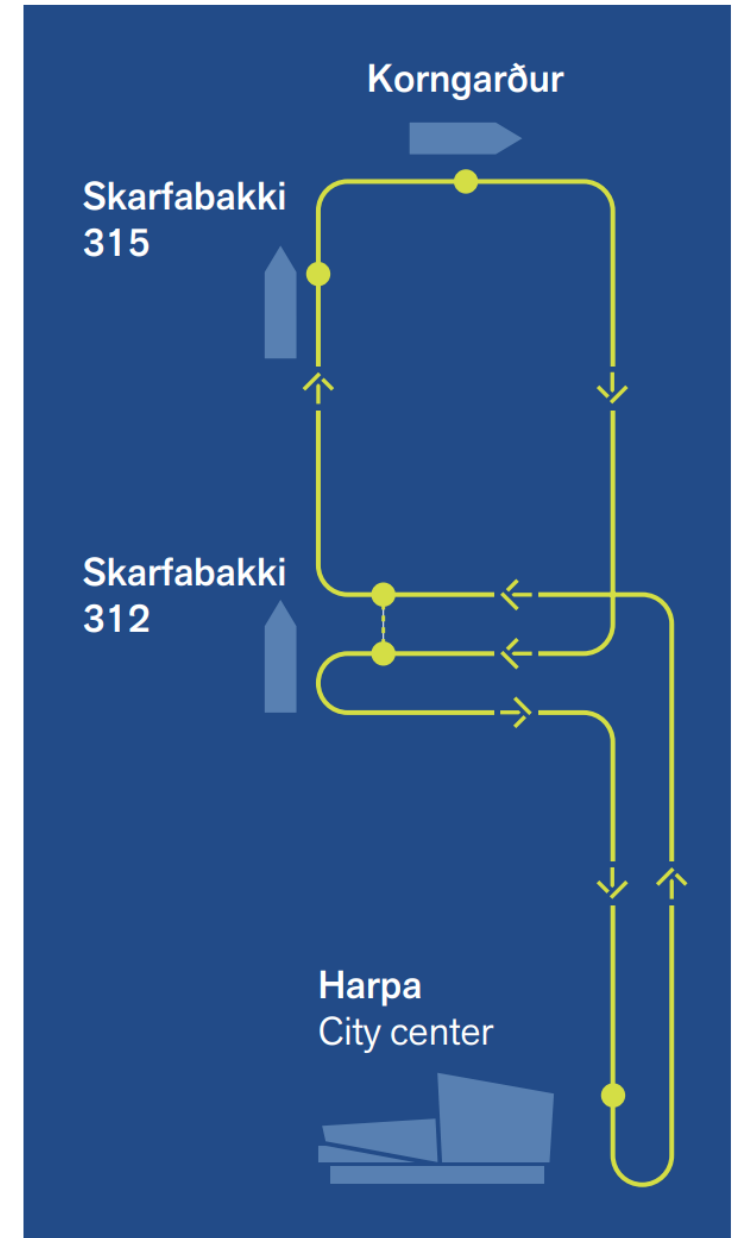
## Harpa City shuttle

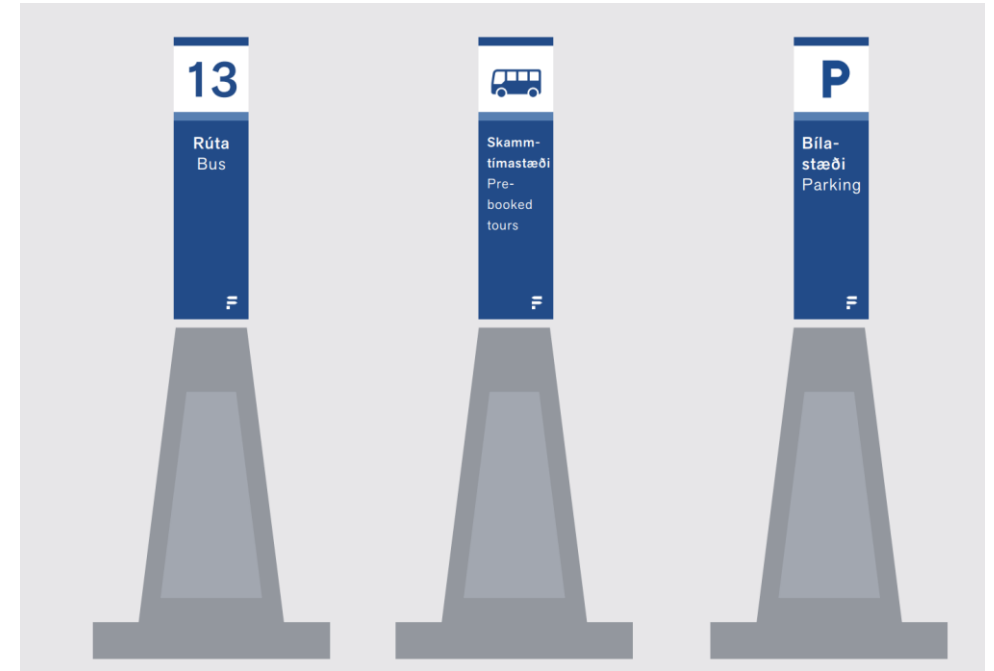


## Skarfabakki Cruise Terminal



## Skutla Terminal shuttle





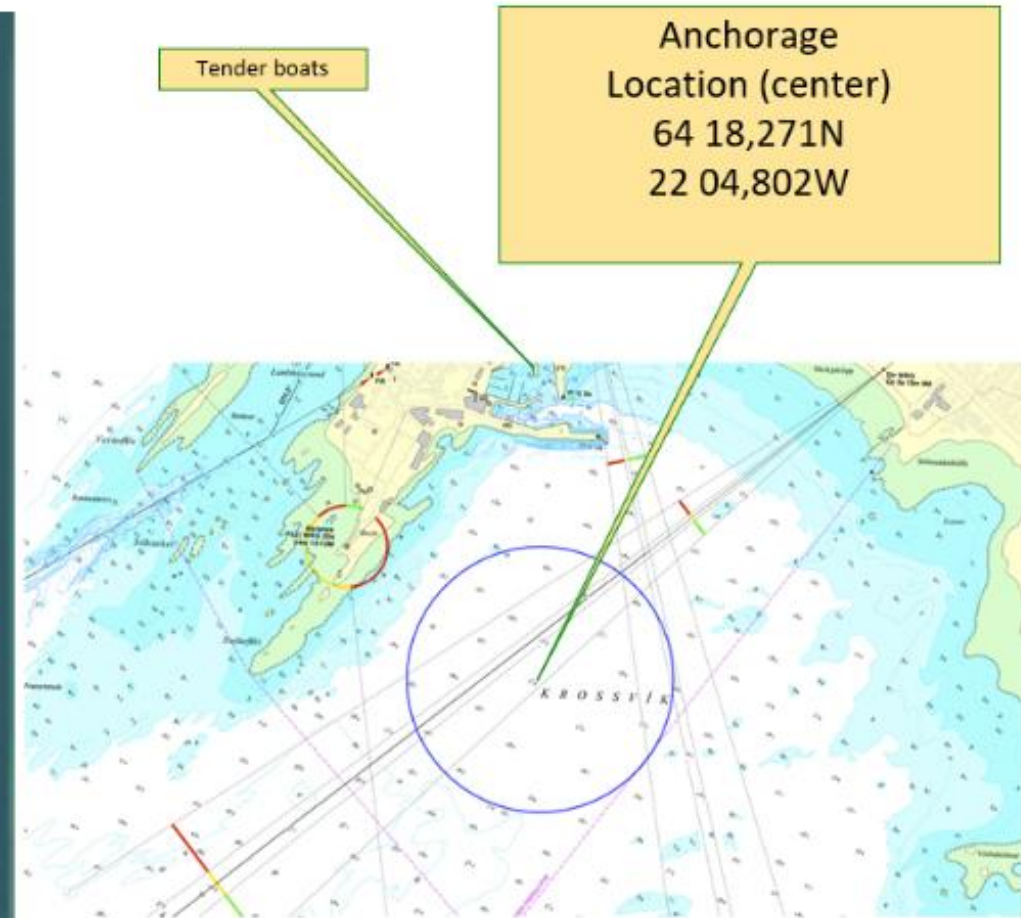




AKRANES

**AKRANES - TERMINAL**

# Akranes – Anchorage







# Akranes – Anchorage

## Tendering from anchorage





Faxaflóahafnir / Faxaports

**EQUIPMENT AVAILABILITY SUBJECT TO ORDER  
ALL TERMINALS**



# Yokohama fenders

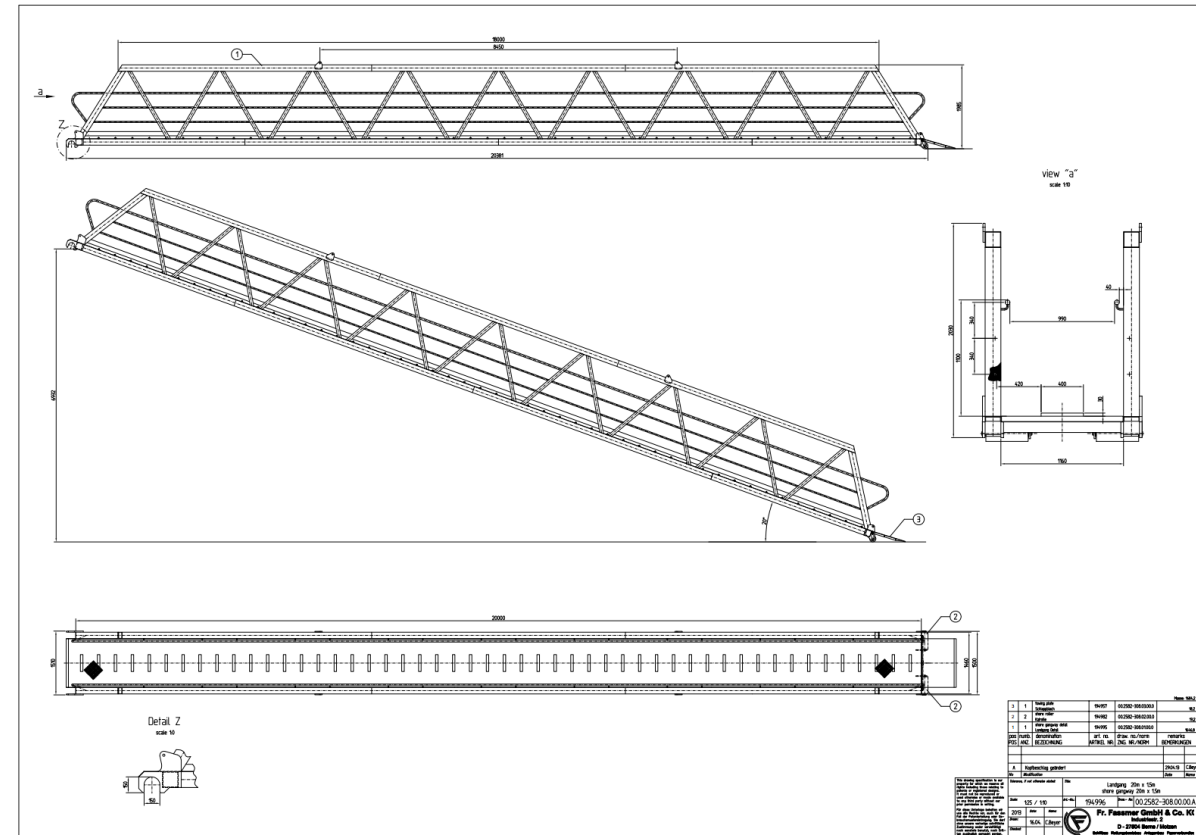
- Availability subject to order
  - 3,5m x 4,5m





# Gangways

- Lloyd's certified
  - 4x20m, 2x18m, 2x15m, 2x12m
  - 2x10m
- Availability subject to order
- Port services will install and remove gangways

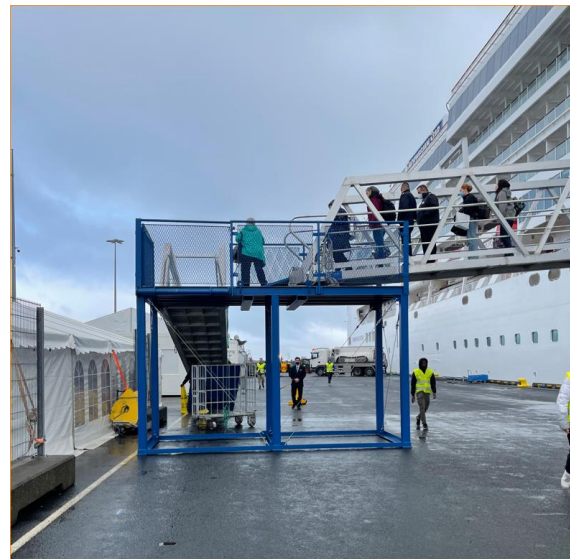
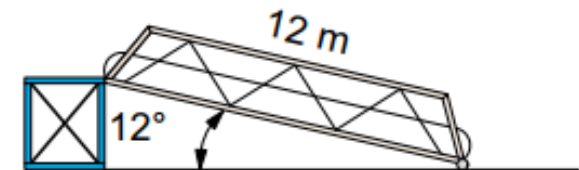
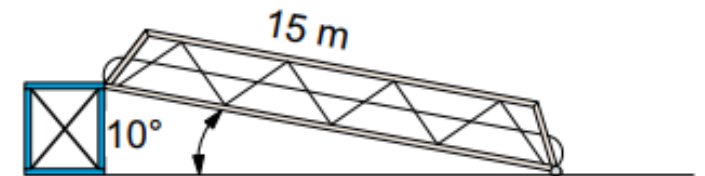
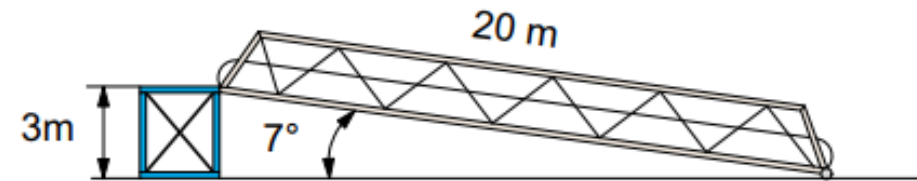


# Platforms for gangways

- Platforms 3m height
  - 4x available
  - Availability subject to order
  - Gives provisions access at ship side

## Platforms and gangways.

Incline angle of 12,15 and 20m gangways  
from elevated platform to ground.  
Platform height 3m





Takk fyrir / Thank you

